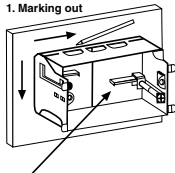


## V157 Fire Rated Wall Box Installation Instructions

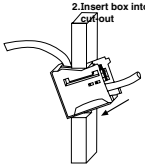
1. Use box as a template to mark cut-out in wall. Cut-out size is approx. 96 x 52mm.
2. Cut accurate size opening in wall to ensure a neat fit of the wall box & minimal gap around edges.
3. If bringing cables through rear of box, remove knockout for cable entry. Carefully slit intumescent mat inside box with a sharp knife but **do not remove any intumescent material**.
4. Feed cables into wall box. Ensure intumescent mats are firmly against rear of wall box.
5. Ensure clamping arms are fully retracted into box.
6. Insert box into wall cut-out.
7. Gently tap retaining lugs until these are flush with wall face.
8. Extend both clamping arms outwards.
9. Tighten clamping arm screws until box is firmly fixed in position.  
**Caution: Do not overtighten.**
10. Fit foam gasket supplied between power outlet/ switch plate & box for acoustic properties.

**\*NOTE:** Rating is dependent on strict adherence to installation instructions.  
Use Fire Rated Sealant (FRS300), or equivalent, to completely seal any gaps around box or to replace any intumescent material inadvertently removed.

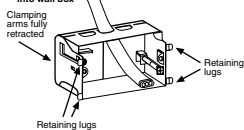
1. Marking out



2. Insert box into cutout



3. Feed cable into wall box



4. Extend both clamping arms outwards and tighten screws

